



**powerhand**<sup>®</sup>

**VRS 200**  
BASE MACHINE BUYING GUIDE

## SUGGESTED BASE MACHINE SIZE

Excavator:

Approx. **20** Tonnes  
Base Weight



Wheeled materials handler:

Approx. **22** Tonnes  
Base Weight

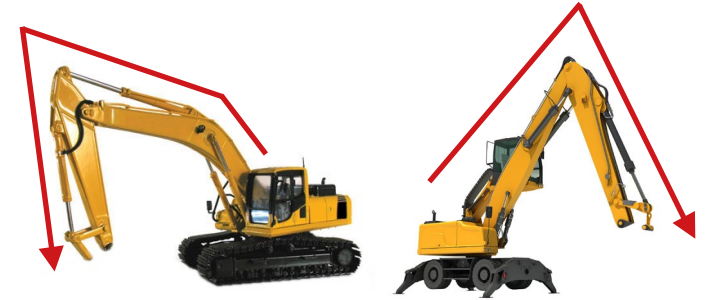


## BASE MACHINE REQUIREMENTS

- 1 Two hydraulic services down the boom to operate the grapple open / close and rotate - left and right functions (shear / rotate function)

Grab Open / Close  
350 Bar + 100-120 litres / minute oil flow.

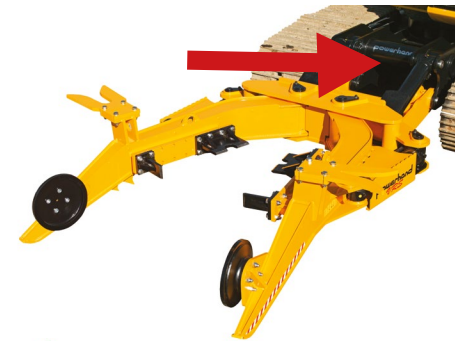
Grab Rotate  
250 Bar + 60-80 litres / minute oil flow.  
Please note: This is not standard and may require the pump on the machine to be changed for a higher output version.



- 2 Two hydraulic functions through the front of chassis of the machine

Clamp Legs Raise / Lower + Open / Close  
350 Bar + 100-120 litres / minute oil flow.

Please note: Although some machines can be ordered new with these functions already fitted, standard machines will require the extra services to be installed, consideration should be given to the extra cost of this work when buying a machine. Machines already fitted with the extra hydraulic services to the undercarriage (i.e. a blade service) will be simpler (therefore cheaper) to convert.



- 3 Unbreakable glass protection (Margard) front window

Please note: This is not standard and will need to be fitted to the machine.



# SUGGESTED OPTIMAL MACHINE SPECIFICATION

1



Existing Bulldozer Blade Mounts  
(To make installation simpler)

2



Short Dipper Boom & Large dia. Pivot Pins  
(Short dipper boom allows greater control of the VRS Grab when operating close in to the machine, Large dia. pivot pins - for strength and longevity)

3



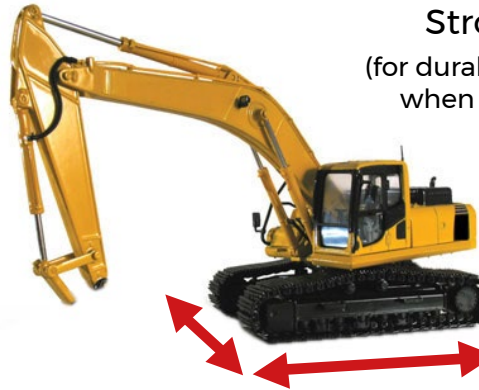
Two-Piece Boom  
(Increases rigidity and reduces cost compared to a 3 piece boom)

4



Quick Coupler on End of Boom  
Adds Extra Weight  
(To be used only if required)

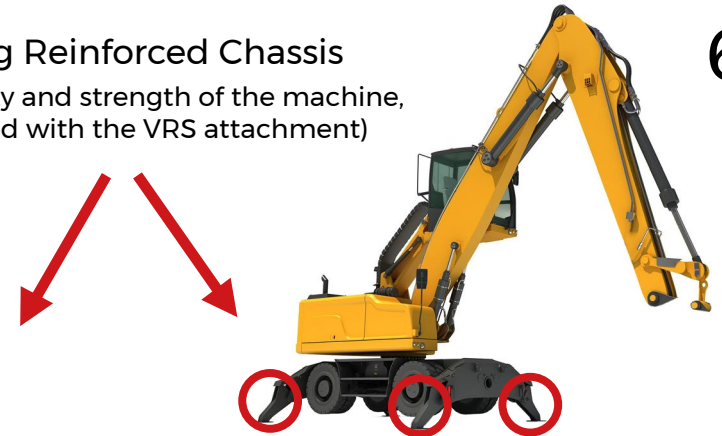
5



Large and Wide Track Frame on Excavators  
(For optimal stability)

Strong Reinforced Chassis  
(for durability and strength of the machine, when used with the VRS attachment)

6



Outriggers on Materials Handlers  
(For optimal stability)

## CONTACT INFO FOR TECHNICAL ADVICE

### **KEN COUPLAND**

**TECHNICAL  
MANAGER**

Tel: 01387 860241  
Mobile: 07734 877135  
ken@powerhand.com  
Parkgate | Dumfries | DG1 3NB

### **SCOTT ROBERTSON**

**PRODUCTION  
MANAGER**

Tel: 01387 860241  
Mobile: 07584 070048  
info@powerhand.com  
Parkgate | Dumfries | DG1 3NB

---

Powerhand has no responsibility as to the performance of the excavator's hydraulic system or the structural adequacy for fitting of the VRS. If there is any doubt the customer should consult the machine manufacturer themselves.

**powerhand<sup>®</sup>**

[WWW.POWERHAND.COM](http://WWW.POWERHAND.COM)